

# Safety Cushion

## PRODUCT PERFORMANCE

COMFORT	✓✓✓✓
GRIP	✓✓✓✓
WEAR	✓✓✓✓
DRAINAGE	✓✓✓✓✓

CODE	SIZE
CLS	600 x 900mm
CLN	900 x 1500mm
CLY	900 x 1500mm (YB)
CLG	600 x 900mm (GP)
CLR	900 x 1500mm (GP)

12mm thick

(YB): Yellow Border

(GP): Grease Proof

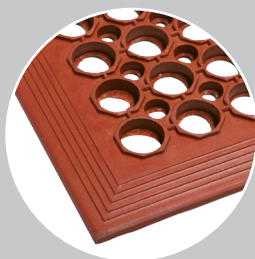


**matTEK**<sup>®</sup>  
By Kenware Commercial

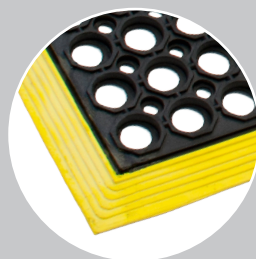
Safety Cushion is a non-slip comfortable safety mat for wet or dry areas. It is used behind bars, counters, factories, food preparation areas, at work benches or work stations.

### FEATURES

- Made from soft rubber compound which relieves strains from constant standing.
- Honeycomb design surface provides grip in wet areas.
- Drainage holes leave mat surface dry preventing slips.
- Bevelled edges eliminate trips or falls on mat edges.
- Grease proof option - mat will not deteriorate in high grease or oil use areas.
- Yellow border option increases visibility on mat edges.
- HACCP Certified.



Terracotta (Grease Proof)



Yellow Border