

Know your hazard:

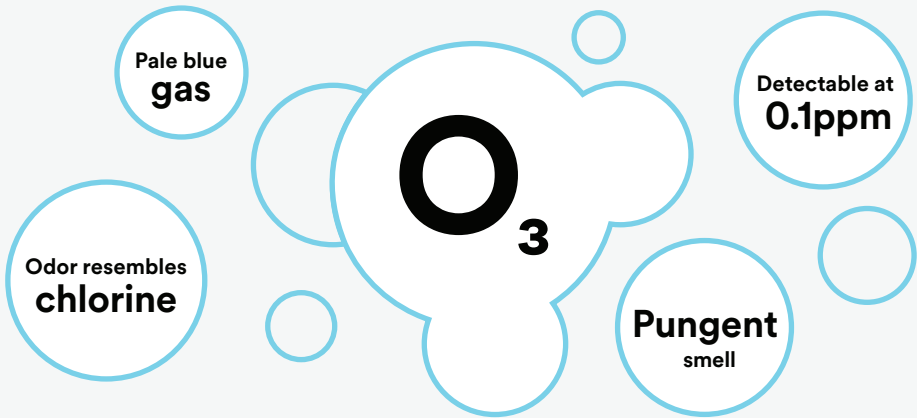
Ozone

What is Ozone?

Ozone, or trioxygen, is an inorganic molecule with the chemical formula O₃.

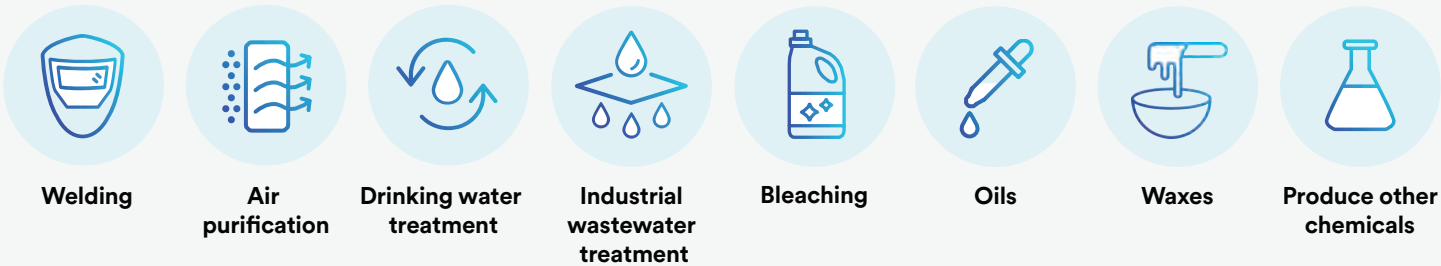
It is a pale blue gas with a distinctively pungent smell resembling chlorine.

Many people can detect ozone in the air at concentrations as low as 0.1 ppm.



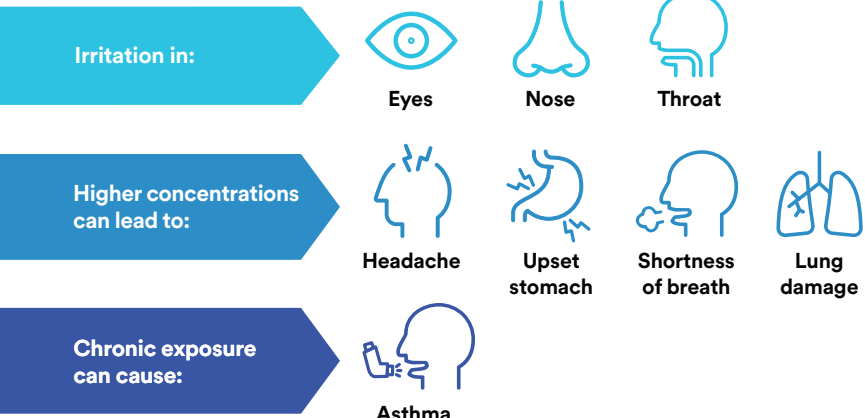
Where is Ozone used?

Ozone plays an important role in various industrial processes. According to the U.S. National Institute for Occupational Safety and Health^ (NIOSH), ozone is utilised in:



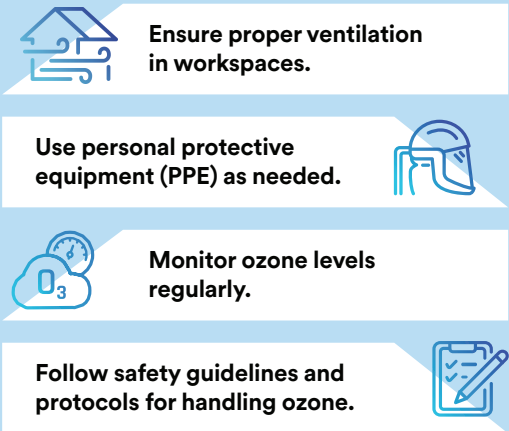
Harmful effects of Ozone exposure

Exposure to ozone can lead to several health observations, including:



How can one protect against it?

To reduce exposure and risks to workers, you can:



What RPE does 3M recommend for Ozone protection?

3M provides a comprehensive range of respiratory protective equipment (RPE) designed to safeguard your team from ozone exposure. Explore our selection of RPEs to identify the best fit for your specific work environment.

Type of Respirators	Exposure Type	Recommended 3M Respiratory Protective Equipment*
<div></div> <div>Powered Air Respirator</div>	Up to 1ppm ozone with estimated service life of 40 hours	<div></div> + <div></div> + <div></div>
	For nuisance odor relief only	<div></div> + <div></div> + <div></div>
<div></div> <div>Supplied Air Respirator</div>	Ozone concentration of more than 1 ppm	<div></div> OR <div></div>
<div></div> <div>Reusable Respirator</div>	Up to 1ppm Ozone with estimated service life of 40 hours	<div></div> + <div></div>
	For nuisance odor relief only	<div></div> + <div></div>
<div></div> <div>Disposable Respirator</div>	10X OEL/WES/WEL for up to 8 hours	<div></div>

*If using these filters or cartridges for ozone and additional gas/vapour/particulate hazards, consult appropriate product *User Instructions* for additional guidance on time use limitations. This is only a recommendation for minimum PPE required. Each work application must be evaluated by a competent person as required by local laws and regulations for the hazard and risk before selection of the right PPE. Workplace rules and regulations must take precedence, if more stringent.
^https://www.cdc.gov/niosh

REQUEST A DEMO

To know which respiratory protection is best suited for your work environment, scan the QR code.

AU and NZ

READ MORE

For more information on the hazard and product disclaimers, scan the QR code for the technical bulletin.

AU and NZ

EXPLORE MORE

To discover variety of respiratory protection equipment from 3M, for your workers, scan the QR code.

AU

NZ

3M

Available from

The safety professionals!

3M, Versaflo, Secure Click are trademarks of 3M. Used under license by 3M subsidiaries and affiliates. All other trademarks herein are property of their respective owners.
© 3M 2025. All rights reserved.